

# Sheridan Station West Parking Rules Examples

## **NOT ALLOWED - EMERGENCY ACCESS LANE OBSTRUCTION - IMMEDIATE TOWING (NO WARNING)**

Parking between, or at, no parking signs



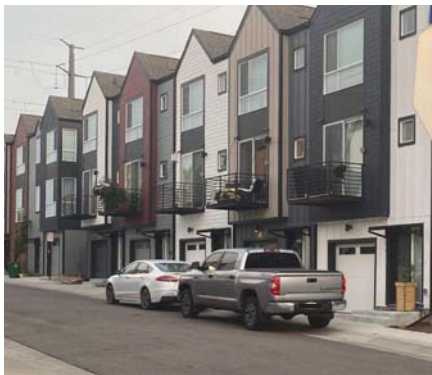
Alley parking

(Short-term while unloading/loading with hazard lights on is okay)



## **NOT ALLOWED - ONE-TIME WARNING ONLY, THEN TOWED WITHOUT FURTHER NOTICE**

Sideways parking - overlapping into street



Driveway parking - overlapping into street



Sideways parking - tire overlaps into gutter



Driveway parking - tires overlap into gutter



## **Allowed Parking - Preferred parking is inside your garage or designated street parking. You may also:**

Sideways parking - no part of tire on curb or over



Driveway parking - tires fully on driveway / sidewalk

